



FLIPPER MARIN
PART OF NIMBUS GROUP

5.7L V10

350- 400HP

Verado[®]

THE EVOLUTION OF PREMIUM PERFORMANCE

With the strength of the outboard segment's first V10 naturally aspirated powerhead, 350 and 400hp Verado outboards deliver extraordinary power and capabilities so you can confidently explore beyond the horizon. Take command of the water with innovative SmartCraft[®] technologies and advanced digital controls that make boating effortless. Exceptionally smooth, quiet and refined, V10 Verado outboards transform your boating experience.

MORE INNOVATIONS AND OPTIONS

- High-displacement 5.7-liter powerhead makes tackling tough conditions and moving heavy loads a breeze
- Performance-inspired quad-cam design propels boats ahead with exceptional speed and acceleration
- Rugged, engine-specific gearcase optimizes handling and control
- Class-leading 150-amp alternator swiftly charges battery systems to support onboard electronics
- Large-diameter Revolution X[™] prop enhances steering authority, efficiency and acceleration

LEARN MORE AT MERCURYMARINE.COM/V10



 **MERCURY**
GO BOLDLY.™

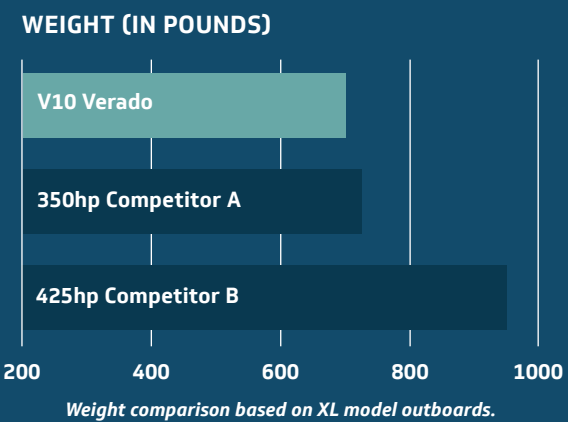
MERCURY VERADO: SUPERIOR PERFORMANCE AND HANDLING

Agile, quiet and strong, Mercury V10 Verado® outboards shift your expectations of what high-horsepower performance feels like. They come to life with impressively responsive power, propelling you forward with faster acceleration than any other outboards in their class. Handling is effortless thanks to intuitive Digital Throttle & Shift controls and an advanced steering system that react instantly to your commands. It's an unrivaled driving experience that only Verado outboards can provide.



SENSATIONAL POWER IN A COMPACT PACKAGE

These outboards were meticulously sculpted and refined so they can mount as close as 26 inches apart, perfect for multi-engine configurations or repowering your favorite boat. A durable aluminum engine block and weight-saving cowl materials further enhance performance by minimizing weight on the transom.

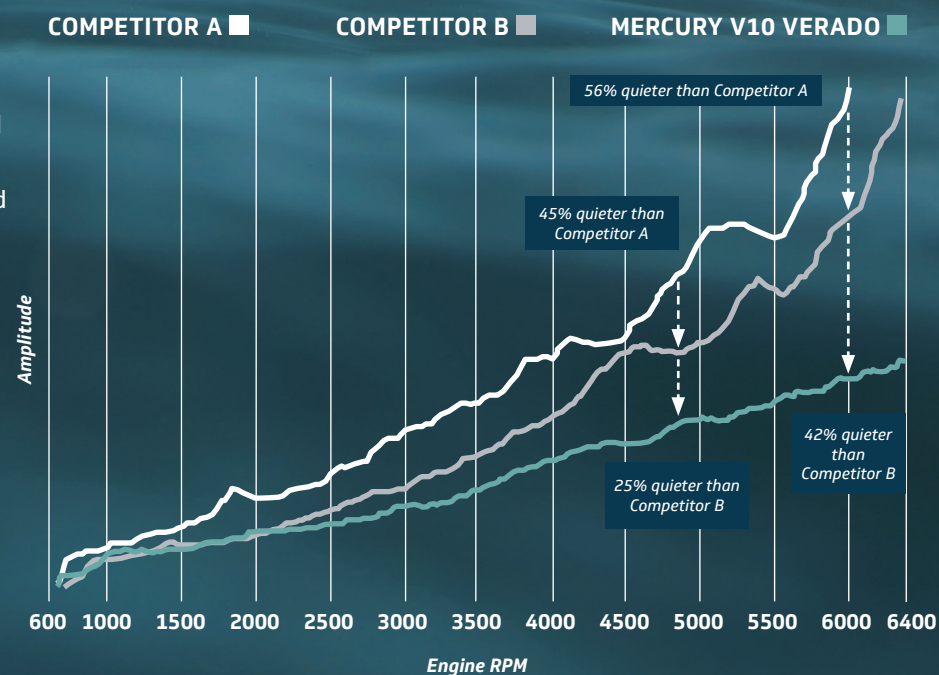


SMOOTH, QUIET, REFINED

Industry-leading technologies that minimize noise, vibration and harshness ensure that V10 Verado outboards deliver an unsurpassed boating experience that delights the senses without overpowering them. At idle, cruise and wide-open throttle, they're quieter than all other outboards in their class.

EFFICIENT ALL-AROUND PERFORMANCE

V10 Verado outboards are calibrated to deliver full performance on 87-octane fuel, with a host of efficiency-enhancing features such as a hydrodynamic gearcase, engine-specific Revolution X™ prop, closed-loop fuel system and Advanced Range Optimization (ARO) that optimize fuel economy to extend your range on the water.



Test conducted in Mercury Noise, Vibration, Harshness Technical Center.

INTUITIVE, INNOVATIVE FEATURES

The **Adaptive Speed Control** feature lets you maintain engine rpm despite changes in load or conditions. Climbing large swells is easier. Cruising at low speeds is smoother. Carving out tight turns is effortless. You just point the bow toward your destination, and Verado takes it from there.

A **class-leading 150-amp alternator** swiftly charges onboard batteries and intelligently supports the boat's electrical system to help ensure that no matter what amenities you bring on board, you'll always have the power you need.

When needed, the **idle charge battery management system** works for you by monitoring battery voltage and adjusting engine rpm at idle to boost alternator output.



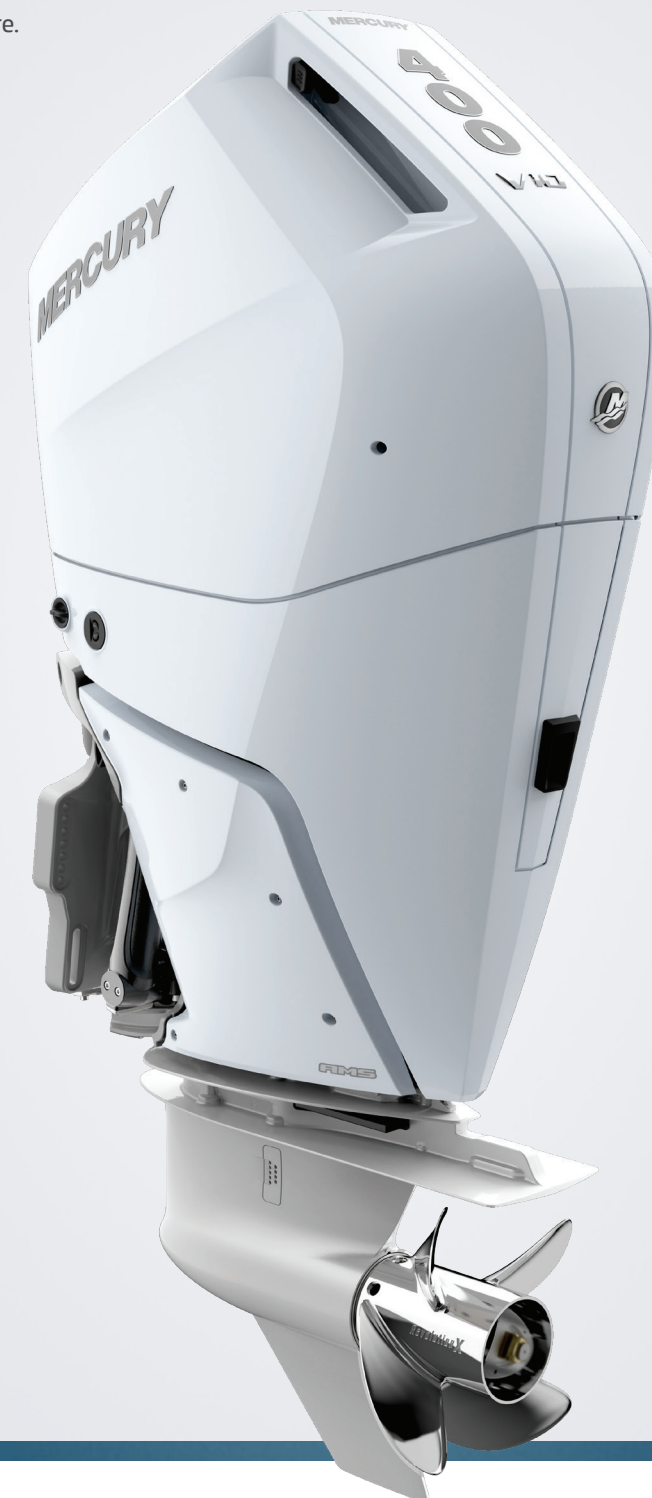
JOYSTICK PILOTING FOR OUTBOARDS (JPO)

Available for multi-engine boats, the JPO system provides fingertip control to move forward, sideways or even rotate in place for easy, confident docking.



ADVANCED SOUND CONTROL

Choose the sound that moves you by toggling between a whisper-quiet exhaust tone or a throatier growl at startup and idle.



ADVANCED MIDSECTION (AMS)

The rugged, refined AMS mounting system cradles the engine, minimizing vibration and providing comfort in a class all its own.



RUGGED GEARCASE

An engine-specific hydrodynamic gearcase optimizes efficiency, while allowing the use of large-diameter props that enhance low-speed control and provide exceptional hole shots when it's time to move.

PREMIUM PERFORMANCE, PREMIUM STYLING

Four sleek color options let you decide what performance looks like. You can further personalize your engine with Color Accent Panels in five colors or a customizable paint-ready option.



Pearl Fusion

Cold Fusion

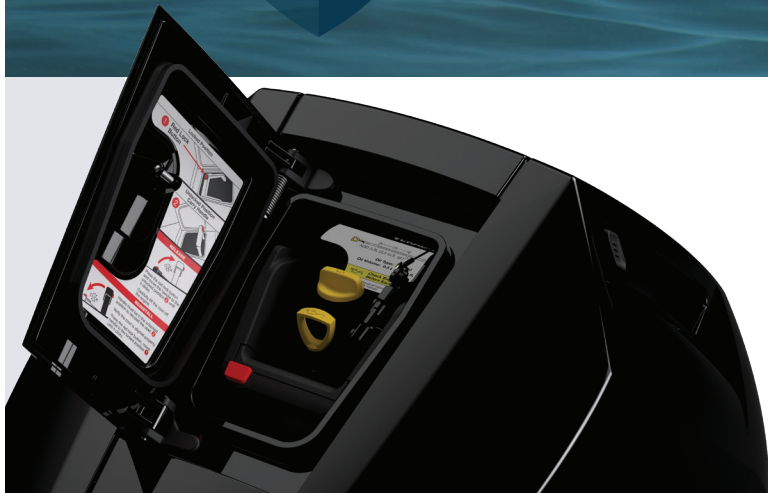
Warm Fusion

Phantom Black



LEGENDARY DURABILITY

Heavy-duty components built to tackle the toughest conditions. Advanced corrosion-preventive finishes to withstand the rigors of saltwater. And the intelligent Mercury Engine Guardian system, which monitors engine functions to help make sure you get home. Verado outboards deliver performance you can trust.



EASY MAINTENANCE

- An electronic oil sensor notifies you of the oil level on a connected multi-function display.
- Industry-exclusive top-cowl access door eliminates hassle, allowing you to top off oil without removing the cowl.
- Color-coded touch points speed up routine checks to get you underway faster.

HORSEPOWER	350	400
WOT RPM	5800-6400	5800-6400
Engine Type	V10	V10
Displacement	5.7L (349 CID)	5.7L (349 CID)
Induction	Naturally aspirated, performance-tuned intake manifold	Naturally aspirated, performance-tuned intake manifold
Starting	Electric start with SmartStart protection	Electric start with SmartStart protection
Gear Ratio	2.08:1	2.08:1
Alternator	150 amp (1890 watt)	150 amp (1890 watt)
Trim System	Power trim and tilt	Power trim and tilt
Dry Weight*	695lbs (316kg)	695lbs (316kg)
Steering	Electro-hydraulic power steering JPO (optional)	Electro-hydraulic power steering JPO (optional)
Shaft Length	20 in (508mm) 25 in (635mm) 30 in (762mm) 35 in (889mm)	20 in (508mm) 25 in (635mm) 30 in (762mm) 35 in (889mm)

*Dry weight: Lightest-version model, excludes engine oil, rigging, hardware.



WARRANTY | Mercury Verado outboards come with a standard three-year limited warranty and industry-leading three-year corrosion warranty.